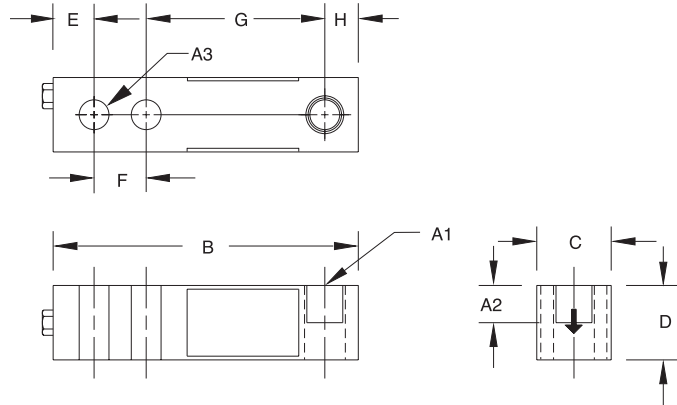


RL30000 Single-Ended Beam, Alloy Steel

NTEP 1:5000 Class III Multiple Cell, IP67



Picture is a representation of actual product



RATED CAPACITY	DIMENSIONS									
	A1*	A2†	A3*	B	C	D	E	F	G	H
lb/inches										
250-5000 SE	1/2-20 UNF-2B	.60	.53	5.12	1.25	1.25	.62	1.00	3.00	.50
5000 LE-10,000	3/4-16 UNF-2B	.75	.78	6.75	1.50	1.50	.75	1.50	3.75	.75
15,000-20,000	1-12 UNF-2B	1.00	1.03	8.75	2.00	2.00	1.00	2.00	4.75	1.00
kg/mm										
113.4-2268 SE	1/2-20 UNF-2B	15.2	13.5	130.1	31.8	31.8	15.8	25.4	76.2	12.7
2268.0 LE-4535.9	3/4-16 UNF-2B	19.1	19.8	171.5	38.1	38.1	19.1	38.1	95.3	19.1
6803.9-9071.9	1-12 UNF-2B	25.4	26.2	222.3	50.8	50.8	25.4	50.8	120.7	25.4

* Dimension A1 is identical to A3 on the RL30002 Thru-Hole Model. † Dimension A2 applies to RL30000 Threaded-Hole Model ONLY

SPECIFICATIONS:

Full Scale Output: 3.0 mV/V
Bridge Resistance: 350 ohms, nominal
Material/Finish: High-alloy steel, nickel plated
Temperature: Compensated range 14°F to 104°F/-10°C to 40°C
 Environmentally-sealed, IP67
Seal Type: Environmentally-sealed, IP67
Safe Overload: 150% Full scale
Rated Excitation: 10V DC (15V maximum)
Nonlinearity: 0.03% Full scale
Hysteresis: 0.02% Full scale

Insulation Resistance: 5000 megohms
Deflection at Capacity: 250-1000 lb = .013"/.33 mm, 2000-3000 lb = .015"/.38 mm, 4000-5000 lb = .025"/.64 mm, 10,000 lb = .032"/.81 mm, 15,000-20,000 lb = .038"/.97 mm
Cable Length: 20'/6.1 m
Cable Color Code:
 Red + Excitation
 Black..... - Excitation
 Green..... + Signal
 White - Signal
Warranty: 2-year limited warranty

RL30000 (THREADED HOLE) ORDER INFORMATION

Load Rating	Part #	Price
RL30000 NTEP, Threaded-Hole Design		
1000 lb (453.6 kg)	21491	\$295.00
2000 lb (907.2 kg)	21493	\$295.00
2500 lb (1134.0 kg)	21495	\$295.00
3000 lb (1360.8 kg)	21497	\$295.00
4000 lb (1814.4 kg)	21498	\$295.00
5000 lb SE (2268.0 kg)	21500	\$295.00
5000 lb LE (2268.0 kg)	21501	\$375.00
10,000 lb (4535.9 kg)	21503	\$375.00
RL30000 Non-NTEP, Threaded-Hole Design		
**250 lb (113.4 kg)	17341	\$295.00
500 lb (226.8 kg)	17342	\$295.00
15,000 lb (6803.9 kg)	28759	\$645.00
20,000 lb (9071.9 kg)	17109	\$645.00
Conduit Adapter Kit* (must be factory installed to maintain warranty)		
3/8-24 Nipple	31533*	\$25.00
3/8-24 to 1/4-18 NPT	31534*	\$25.00

* Parts #31533 and #31534 must be installed together to form the Conduit Adapter Kit

** Not FM approved

SE refers to small envelope

LE refers to large envelope

RL30002 (THRU HOLE) ORDER INFORMATION

Load Rating	Part #	Price
RL30002 NTEP, Thru-Hole Design		
1000 lb (453.6 kg)	21521	\$295.00
2000 lb (907.2 kg)	21522	\$295.00
2500 lb (1134.0 kg)	21523	\$295.00
4000 lb (1814.4 kg)	21524	\$295.00
5000 lb SE (2268.0 kg)	21525	\$295.00
Conduit Adapter Kit* (must be factory installed to maintain warranty)		
3/8-24 Nipple	31533*	\$25.00
3/8-24 to 1/4-18 NPT	31534*	\$25.00

INTERCHANGEABLE PRODUCTS

Manufacturer	Model
Threaded-Hole Design	
Vishay Revere Transducers	(see page 267) 5123
Vishay Tedea-Huntleigh	3411
Artech	30310

WEIGH MODULE AVAILABLE

Model	Page #
RL50210 TA	30
RL1800 Series	42