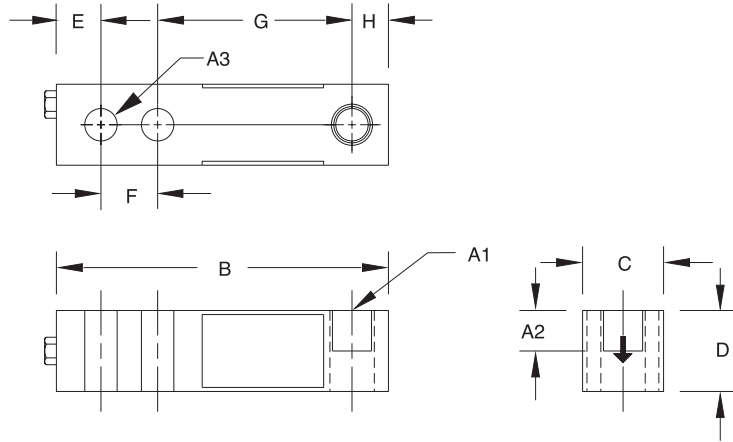
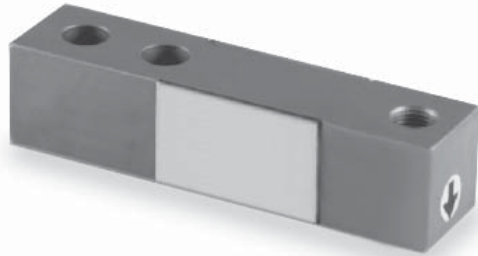


# RL39123 Single-Ended Beam, Stainless Steel



Picture is a representation of actual product

RATED CAPACITY	DIMENSIONS									
	A1	A2	A3	B	C	D	E	F	G	H
<b>lb/inches</b>										
250-4000	1/2-20 UNF-2B	.60	.53	5.12	1.25	1.25	.62	1.00	3.00	.50
5000-10,000	3/4-16 UNF-2B	.75	.78	6.75	1.50	1.50	.75	1.50	3.75	.75
15,000	1-12 UNF-2B	1.00	1.03	8.75	2.00	2.00	1.00	2.00	4.75	1.00
<b>kg/mm</b>										
113.4-1814.4	1/2-20 UNF-2B	15.2	13.5	130.1	31.8	31.8	15.8	25.4	76.2	12.7
2268.0-4535.9	3/4-16 UNF-2B	19.1	19.8	171.5	38.1	38.1	19.1	38.1	95.3	19.1
6803.9	1-12 UNF-2B	25.4	26.2	222.3	50.8	50.8	25.4	50.8	120.7	25.4

## SPECIFICATIONS:

<b>Full Scale Output:</b>	3.0 mV/V	<b>Hysteresis:</b>	0.02% Full scale
<b>Bridge Resistance:</b>	350 ohms, nominal	<b>Insulation Resistance:</b>	5000 megohms
<b>Material/Finish:</b>	Stainless steel	<b>Deflection at Capacity:</b>	250-1000 lb = .013"/.33 mm, 2000-3000 lb = .015"/.38 mm, 4000-5000 lb = .025"/.64 mm, 10,000 lb = .32"/.81 mm, 15,000-20,000 lb = .038"/.97 mm
<b>Temperature:</b>	Compensated range 0°F to 150°F/-18°C to 65°C	<b>Cable Length:</b>	20'/6.1 m
<b>Seal Type:</b>	Environmentally-sealed	<b>Cable Color Code:</b>	Red ..... + Excitation Black..... - Excitation Green ..... + Signal White ..... - Signal
<b>Safe Overload:</b>	150% Full scale	<b>Warranty:</b>	2-year limited warranty
<b>Rated Excitation:</b>	10V DC (15V maximum)		
<b>Nonlinearity:</b>	0.03% Full scale		

## RL39123 ORDER INFORMATION

Load Rating	Part #	Price
250 lb (113.4 kg)	17386	\$350.00
500 lb (226.8 kg)	17387	\$350.00
1,000 lb (453.6 kg)	17189	\$350.00
2,500 lb (1134.0 kg)	17191	\$350.00
4,000 lb (1814.4 kg)	17193	\$350.00
5,000 lb (2268.0 kg)	17194	\$420.00
10,000 lb (4535.9 kg)	17195	\$420.00
15,000 lb (6803.9 kg)	17196	\$795.00
<b>Conduit Adapter Kit* (must be factory installed to maintain warranty)</b>		
3/8-24 Nipple	31533*	\$25.00
3/8-24 to 1/4-18 NPT	31534*	\$25.00

\* Parts #31533 and #31534 must be installed together to form the Conduit Adapter Kit

## INTERCHANGEABLE PRODUCTS

Manufacturer	Model
Vishay Revere Transducers	(see page 268) 9123
Artech	SS30310
HBM	(see page 235) B35

## WEIGH MODULE AVAILABLE

Model	Page #
RL50210 TA	30
RL1800 Series	42