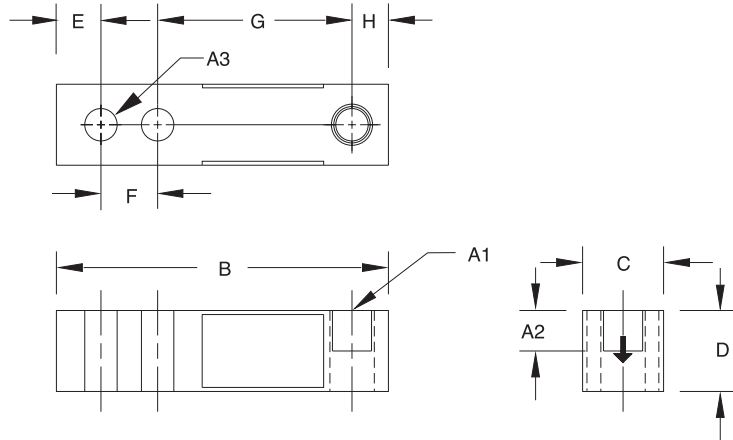


# RL65044 Single-Ended Beam, Alloy Steel



Picture is a representation of actual product



RATED CAPACITY	DIMENSIONS										
	A1	A2	A3	B	C	D	E	F	G	H	
<b>lb/inches</b>											
4000	1/2-20 UNF-2B	.60	.53	6.00	1.25	1.25	.61	1.75	3.00	.63	
<b>kg/mm</b>											
1814.4	1/2-20 UNF-2B	15.2	13.5	152.4	31.8	31.8	15.5	44.5	76.2	16.0	

## SPECIFICATIONS:

<b>Full Scale Output:</b>	3.0 mV/V	<b>Nonlinearity:</b>	0.01% Full scale
<b>Bridge Resistance:</b>	350 ohms, nominal	<b>Hysteresis:</b>	0.01% Full scale
<b>Material/Finish:</b>	High-alloy steel, nickel plated	<b>Insulation Resistance:</b>	5000 megohms
<b>Temperature:</b>	Compensated range 0°F to 150°F/-18°C to 65°C	<b>Cable Length:</b>	20'/6.1 m
<b>Seal Type:</b>	Environmentally-sealed	<b>Cable Color Code:</b>	Red ..... + Excitation Black ..... - Excitation Green ..... + Signal White ..... - Signal
<b>Safe Overload:</b>	150% Full scale	<b>Warranty:</b>	2-year limited warranty
<b>Rated Excitation:</b>	10V DC (15V maximum)		

## RL65044 ORDER INFORMATION

Load Rating	Part #	Price
4000 lb (1814.4 kg)	17110	\$595.00

## INTERCHANGEABLE PRODUCTS

Manufacturer	Model
Electroscale	017116-002
Electroscale	Slimline Series
HBM	SBTE