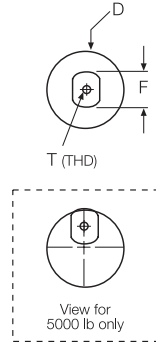
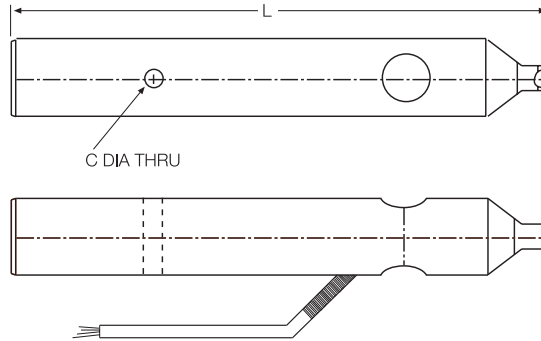




RL75000 SS Single-Ended Beam, Stainless Steel Welded-seal*, IP67



Welded-seal except
1250 lb & 10,000 lb

Picture is a representation of actual product

RATED CAPACITY	DIMENSIONS					
	C	D	F	L	T	
lb/inches						
1250	.312	1.25	.63	11.50	#8-32	
2500	.375	1.62	.70	11.50	#6-32	
5000	.375	2.00	.88	10.88	#8-32	
10,000	.50	2.50	.88	12.63	#8-32	
25,000-37,500	.50	3.50	1.75	15.00	5/16-18	
kg/mm						
567.0	7.9	31.7	16.0	292.1	#8-32	
1134.0	9.5	41.1	17.7	292.1	#6-32	
2268.0	9.5	50.8	22.3	276.3	#8-32	
4535.9	12.7	63.5	22.3	320.8	#8-32	
11,339.8-17,009.7	12.7	88.9	44.4	381.0	5/16-18	

SPECIFICATIONS:

Full Scale Output: 2.0 mV/V (37,500lb 3.0 mV/V)
Bridge Resistance: 350 ohms, nominal (25K + 37.5K nominal with voltage applied)
Material/Finish: Stainless steel
Temperature: Compensated range 0°F to 150°F/18°C to 65°C
Safe Overload: 150% Full scale
Rated Excitation: 15V DC

Nonlinearity: 0.03% Full scale
Hysteresis: 0.05% Full scale
Seal Type: Environmentally-sealed, IP67
Cable Length: 20'/6.1 m
Cable Color Code: Green.....+ Excitation
 Black.....- Excitation
 White.....+ Signal
 Red.....- Signal
 Orange.... Shield
Warranty: 2-year limited warranty

RL75000 SS ORDER INFORMATION

Load Rating	Part #	Price
1250 lb (567 kg)	42501	\$810.00
*2500 lb (1134 kg)	42502	\$810.00
*5000 lb (2268 kg)	42503	\$895.00
10,000 lb (4536 kg)	42504	\$895.00
*25,000 lb (11,340 kg)	42505	\$1,895.00
*37,500 lb (17,010 kg)	47950	\$1,895.00

* Welded-seal

INTERCHANGEABLE PRODUCTS

Manufacturer	Model
Weigh-Tronix®	Weigh Bar