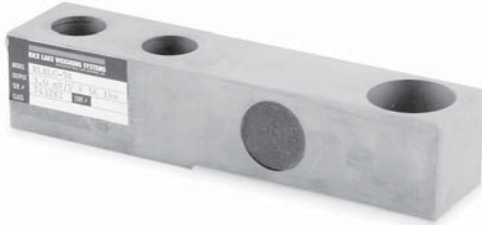
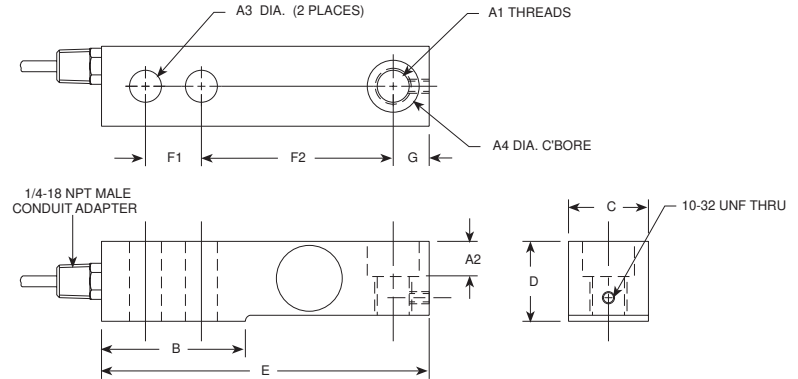


RLBLC Single-Ended Beam, Stainless Steel with Counter Bore



Picture is a representation of actual product



RATED CAPACITY	DIMENSIONS											
	A1	A2	A3	A4	B	C	D	E	F1	F2	G	
lb/inches												
1000-4000	1/2-20 UNF-2B	.56	.53	.81	2.25	1.21	1.19	5.25	1.00	3.00	.60	
5000	3/4-16 UNF-2B	.79	.78	1.19	3.00	1.45	1.44	6.75	1.50	3.75	.75	
10,000	3/4-16 UNF-2B	.79	.78	1.19	3.00	1.69	1.69	6.75	1.50	3.75	.75	
kg/mm												
453.6-1814.4	1/2-20 UNF-2B	14.2	13.5	20.6	57.2	30.2	30.2	130.1	25.4	76.2	12.7	
2268.0	3/4-16 UNF-2B	17.0	19.8	30.2	76.2	36.6	36.6	171.5	38.1	95.3	19.1	
4535.9	3/4-16 UNF-2B	20.1	19.8	30.2	76.2	36.6	49.3	171.5	38.1	95.3	19.1	

SPECIFICATIONS:

Full Scale Output: 3.0 mV/V nominal
Bridge Resistance: 1000 ohms, nominal
Material/Finish: Stainless steel
Temperature: Compensated range 15°F to 115°F/-9°C to 46°C
Seal Type: Environmentally-sealed
Safe Overload: 150% Full scale
Rated Excitation: 10V DC (15V maximum)
Nonlinearity: 0.03% Full scale

Hysteresis: 0.05% Full scale
Insulation Resistance: 5000 megohms
Deflection at Capacity: 1000-4000 lb = .010"/.25 mm, 5000-10,000 lb = .012"/.30 mm
Cable Length: 1000-4000 lb = 10'/3.1 m, 5000-10,000 lb = 20'/6.1 m
Cable Color Code: Green..... + Excitation, Black..... - Excitation, White..... + Signal, Red..... - Signal
Warranty: 2-year limited warranty

RLBLC ORDER INFORMATION

Load Rating	Part #	Price
1,000 lb (453.6 kg)	17091	\$275.00
2,500 lb (1134.0 kg)	17096	\$275.00
4,000 lb (1814.4 kg)	17101	\$275.00
5,000 lb (2268.0 kg)	17104	\$365.00
10,000 lb (4535.9 kg)	17108	\$465.00
Bushing (for conversion to non-counter base)		
1000 lb - 4000 lb, SST	17691	\$8.00

INTERCHANGEABLE PRODUCTS

Manufacturer	Model
HBM	(see page 238) BLC