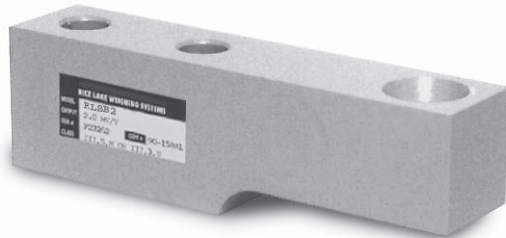
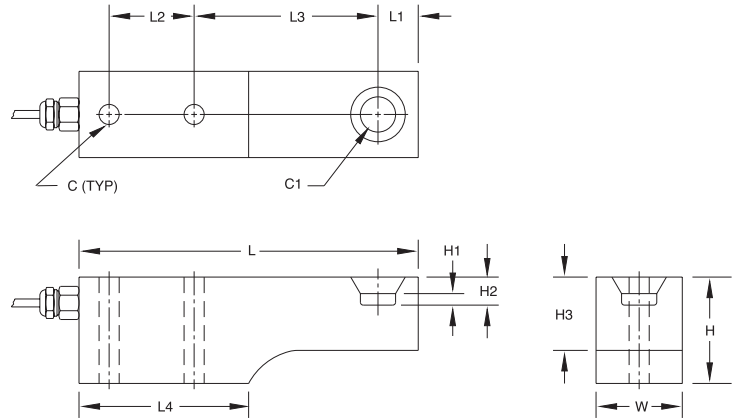




# RLSB2 Single-Ended Beam Alloy Steel with Blind Load Hole, IP67



Picture is a representation of actual product



RATED CAPACITY	DIMENSIONS											
	C	C1	H	H1	H2	H3	L	L1	L2	L3	L4	W
<b>lb/inches</b>												
1000-5000	.53	.87	1.87	.25	.47	1.43	8.00	.87	2.50	3.87	4.00	1.43
10,000	.87	1.00	2.75	.25	.62	1.85	9.25	.87	2.62	4.87	4.62	1.87
35,000	1.31	1.50	3.75	.46	.91	2.68	12.50	1.50	3.50	6.25	6.25	2.75
45,000	1.31	1.50	3.75	.46	.87	2.68	12.50	1.50	3.50	6.25	6.25	2.75
<b>kg/mm</b>												
453.6-2268.0	13.5	22.1	47.5	6.4	11.9	36.3	203.2	22.1	63.5	98.3	101.6	36.3
4535.9	22.1	25.4	69.9	6.4	15.8	47.0	235.0	22.1	66.6	123.7	117.4	47.5
15,875.7	33.3	38.1	95.3	11.7	23.1	68.1	317.5	38.1	88.9	158.8	158.8	69.9
20,411.7	33.3	38.1	95.3	11.7	22.1	68.1	317.5	38.1	88.9	158.8	158.8	69.9

## SPECIFICATIONS:

<b>Full Scale Output:</b>	2.0 mV/V ± .07%* (matched)	<b>Seal Type:</b>	35,000 & 45,000 lb/15,875.7 & 20,411.7 kg, Hermetically-sealed, IP67
<b>Bridge Resistance:</b>	350 ohms, nominal		All others, Environmentally-sealed
<b>Material/Finish:</b>	High-alloy steel, epoxy coated	<b>Cable Length:</b>	1000-5000 lb=10'/3.1 m, 10,000 lb=15'/4.6 m, 35,000-45,000 lb=30'/9.2 m
<b>Temperature:</b>	Compensated range 15°F to 115°F/-9°C to 46°C	<b>Cable Color Code:</b>	Green ..... + Excitation Black ..... - Excitation White ..... + Signal Red ..... - Signal
<b>Safe Overload:</b>	150% Full scale	<b>Warranty:</b>	2-year limited warranty
<b>Rated Excitation:</b>	10V DC (15V maximum)		
<b>Nonlinearity:</b>	0.03% Full scale		
<b>Hysteresis:</b>	0.02% Full scale		
<b>Insulation Resistance:</b>	10000 megohms		

### RLSB2 ORDER INFORMATION

Load Rating	Part #	Price
1000 lb (453.6 kg)	17211	\$1,445.00
2000 lb (907.2 kg)	N/A	N/A
5000 lb (2268.0 kg)	17213	\$1,445.00
10,000 lb (4535.9 kg)	N/A	N/A
35,000 lb (15,875.7 kg)	17216	\$1,595.00
45,000 lb (20,411.7 kg)	17217	\$1,595.00

\* Matched outputs

\*\* Load cells were originally equipped with spark gaps and stainless steel outer sheath cable

### INTERCHANGEABLE PRODUCTS

Manufacturer	Model	Capacity
Masstron®	ML1310	1000 lb (453.6 kg)
Masstron®	ML1320	2000 lb (907.2 kg)
Masstron®	ML1350	5000 lb (2268.0 kg)
Masstron®	ML1410	10,000 lb (4535.9 kg)
Masstron®	ML1435	35,000 lb (15,875.7 kg)
Masstron®	ML1437**	35,000 lb (15,875.7 kg)
Masstron®	ML1445	45,000 lb (20,411.7 kg)
Masstron®	ML1447**	45,000 lb (20,411.7 kg)